

CWA/SDWA Integration Checklist and Regional Examples of Coordination

Wendy Drake, EPA Region 5, Water Division
Amie Howell, EPA Region 3, Water Protection Division

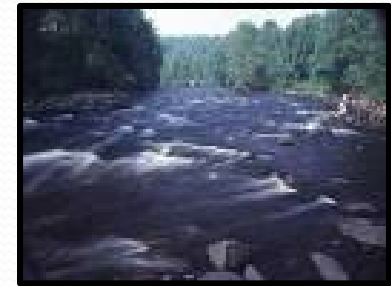
CWA/SDWA Workshop
Washington, DC
March 21, 2017

Outline

- Draft CWA/SDWA Integration Checklist
 - Purpose: voluntary, self-assessments at state and EPA regional levels
- EPA Region 5
 - Examples of CWA/SDWA activities in Region 5 and next steps
- EPA Region 3
 - Region 3 CWA/SDWA integration self-assessment and next steps
 - Examples of CWA/SDWA activities in Region 3

SDWA/CWA Integration Opportunities

- Holistic, integrated approach to water quality problems—achieve mutual goals
- Leverage other program resources
- Broader stakeholder involvement
- Prevent missed opportunities, solutions that become problems
- Achieve total watershed goals



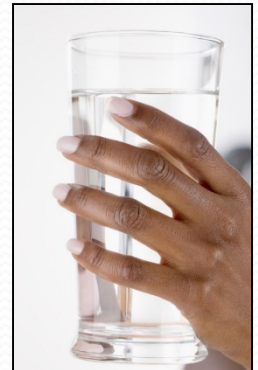
DRAFT CWA/SDWA Integration Checklist

- Region 5 CWA/SDWA integration team created a draft checklist to:
 - Voluntarily self-assess, document, and understand CWA/SDWA integration efforts at the regional and state levels
- Companion to toolkit
 - Checklist can help identify where to focus collaboration efforts (e.g., developing state-specific CWA/SDWA workshop agendas)



DRAFT CWA/SDWA Integration Checklist (cont'd.)

- Topics include:
 - Water quality standards (WQS) for drinking water use
 - Monitor/assess WQS attainment for drinking water use
 - List impaired waters for drinking water use impairments
 - TMDL development for drinking water use impairments in source waters
 - Integrated watershed planning/implementation
 - Control nonpoint sources
 - Control point sources with permits
 - Enforcement
 - Special initiatives and continuing planning process
 - Source water protection program



DRAFT CWA/SDWA Integration Checklist (cont'd.)

- Example questions
 - Water quality standards (WQS) for drinking water use
 - Are waterbodies used for drinking water designated as such?
 - Monitor/assess WQS attainment for drinking water use
 - Are parameters and/or indicators being monitored for waterbodies designated for the drinking water use?
 - List impaired waters for drinking water use impairments
 - Is the state listing drinking water use impairments with associated pollutants and causes/sources of impairments?

PROGRAM AND STATE-SPECIFIC QUESTIONS	YES	NO	DESCRIPTION/ EXPLANATION:
<p>CONTROL NONPOINT SOURCES: The purpose of the questions below are to determine whether SWP is incorporated into the state CWA Section 319 and Clean Water State Revolving Fund (CWSRF) programs, where appropriate. State program contact(s): Please list any names here as appropriate.</p>			
a. Do the state CWA Section 319 program assessment and management plans mention SWP? Please describe.	<input type="checkbox"/>	<input type="checkbox"/>	
b. Does the state's Section 319 grant solicitation process mention SWP? Please describe.	<input type="checkbox"/>	<input type="checkbox"/>	
c. As the state revises their Section 319 management plans, is the source water protection program routinely providing review and comment on the plan? Please describe. i. Has the state recently updated their plan, and does it include SWP? Please describe. Note: In general, states revise their plans every five years, and each Region 3 state is on a different schedule. Any activity funded by Section 319 funds must be discussed in these plans.	<input type="checkbox"/>	<input type="checkbox"/>	
	<input type="checkbox"/>	<input type="checkbox"/>	
d. Is the state drinking water program involved in the review of Section 319 grant applications in SWP areas? Please describe.	<input type="checkbox"/>	<input type="checkbox"/>	
e. Does the state prioritize funding for controlling nonpoint sources in source waters through the CWSRF program and intended use plan (IUP)? Please describe.	<input type="checkbox"/>	<input type="checkbox"/>	
f. Do the state's NPS and SWP programs coordinate with the CWSRF program? Please describe.	<input type="checkbox"/>	<input type="checkbox"/>	
g. Do any state program-specific (Section 319 or CWSRF) checklists/SOPs/methodologies/etc. exist that incorporate SWP for non-point source control? Please describe. i. If so, have these documents been shared with state SWP programs? Please describe.	<input type="checkbox"/>	<input type="checkbox"/>	
	<input type="checkbox"/>	<input type="checkbox"/>	

Examples of Region 5 CWA/SDWA activities

- Water Division CWA/SDWA team
- Self-assessment using the CWA/SDWA integration checklist
- Joint review of state monitoring strategies, impaired water lists, and state nutrient reduction strategies, etc.
- Multiple joint CWA/SDWA director meetings
- Priority: Water quality standards, monitoring, and assessments
 - WI and MN drinking water designated use workshops—replicate in other Region 5 states?

WI and MN Workshop Goals

- Draft an assessment methodology that reasonably and appropriately identifies waters impaired for drinking water use
- Contain enough detail to be implementable in the next two years
- Form foundation for future enhancements for future listing cycles

Workshop Conclusions

- SDWA/CWA integration can be a big topic; narrow focus for workshops
- Identify clear outcomes
- Manage size for robust discussions
- Cover background material and educate in advance (e.g., via webinars) and do homework to hit the ground running

EPA Region 3 CWA/SDWA Integration Self Assessment

- ✓ Presented state Checklist at 2015 Annual EPA/State/Interstate Water Directors Meeting
- ✓ Formed R3 Water Protection Division ad hoc Integration Team and completed Checklist – Spring 2016
- ✓ Summarized and shared initial results with Integration Team
- ✓ Conducted follow-up meetings with individuals to gather additional information and identify activities to improve coordination – Fall 2016

EPA Region 3 CWA/SDWA Integration Self Assessment – Next Steps

- ❑ Developing list of actions to memorialize commitments between CWA and SDWA programs
- ❑ Identify priority actions to address over the next year, working with state partners

Examples of Region 3 CWA/SDWA Activities

- Joint CWA/SDWA Water Directors meetings
- 2016 Algae Summit
- Delaware Estuary Comprehensive Conservation and Management Plan revision
- Octoraro Creek Watershed Integrated Performance Team



Examples of Region 3 CWA/SDWA Activities

- NPDES Permits
 - Downstream notification requirements
 - Reviewing state permit writer tools to verify capability to ensure drinking water protection
- Leveraging funding and technical assistance
 - West Virginia CWA Section 319
 - Lower Susquehanna Source Water Protection Partnership CWA Section 106
 - Eastern Lancaster County SWC
 - Chesapeake Bay CWA Section 117
 - EPA nutrient reduction technical assistance

Thank you

- Amie Howell, EPA Region 3, Water Protection Division, Drinking Water Branch
 - 215.814.5722
 - howell.amie.@epa.gov
- Wendy Drake, EPA Region 5, Water Division, Ground Water and Drinking Water Branch
 - 312.886.6705
 - drake.wendy@epa.gov